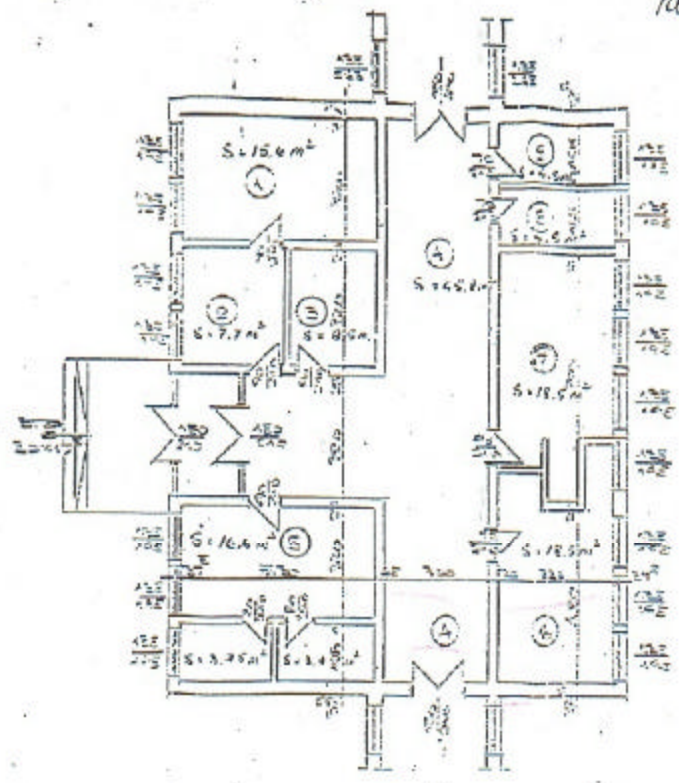
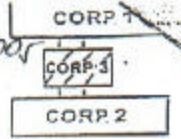


AREA 2
la HCJ 77/22.09.2007



LEGENDA

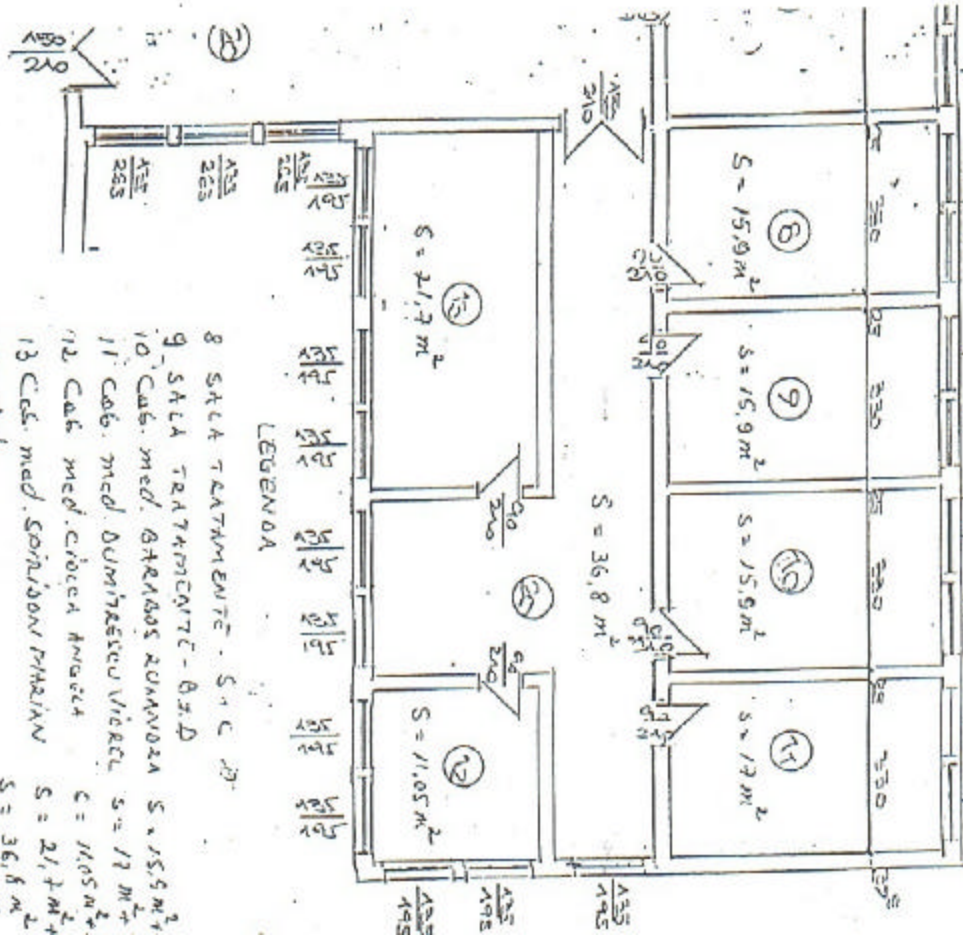
- 1 FISHIA S = 19,0 m²
- 2 STORJAR S = 7,1 m²
- 3 Cab. med. EQUIP. CARNOI S = 6,5 m²
- 4 HAL S = 45,8 m²
- 5 Cab. med. CIRC. LEVINTATA S = 15,9 m²
- 6 Cab. med. CIRC. LEVINTATA S = 15,9 m²
- 7 Cab. med. CIRC. LEVINTATA S = 15,9 m²
- 8 Cab. med. CIRC. LEVINTATA S = 15,9 m²
- 9 HAL S = 36,8 m²
- 10 HAL S = 21,7 m²
- 11 HAL S = 11,05 m²

TOTAL SUPRAFATA UTILA: 142,2 m²

INTENSITATE
POZITIV 1. GHIOROGHIU



CONSILIUL JUDETEAN DE
POLICLINICA VECHIE - COMPLETAREA I



LEGENDA

- 8 SALA TRATAMENTE - S + C D
- 9 SALA TRATAMENTE - S + D
- 10 Cab. med. STRASAS ROMANOA S = 15,9 m²
- 11 Cab. med. DIMINUTIV VIECI S = 17 m²
- 12 Cab. med. CIRC. ANOARA S = 11,05 m²
- 13 Cab. med. SONIDON PHAZIN S = 21,7 m²
- 14 HAL S = 36,8 m²

TOTAL SUPRAFATA UTILA: 134,25 m²



INTENSITATE
POZITIV 1. GHIOROGHIU