

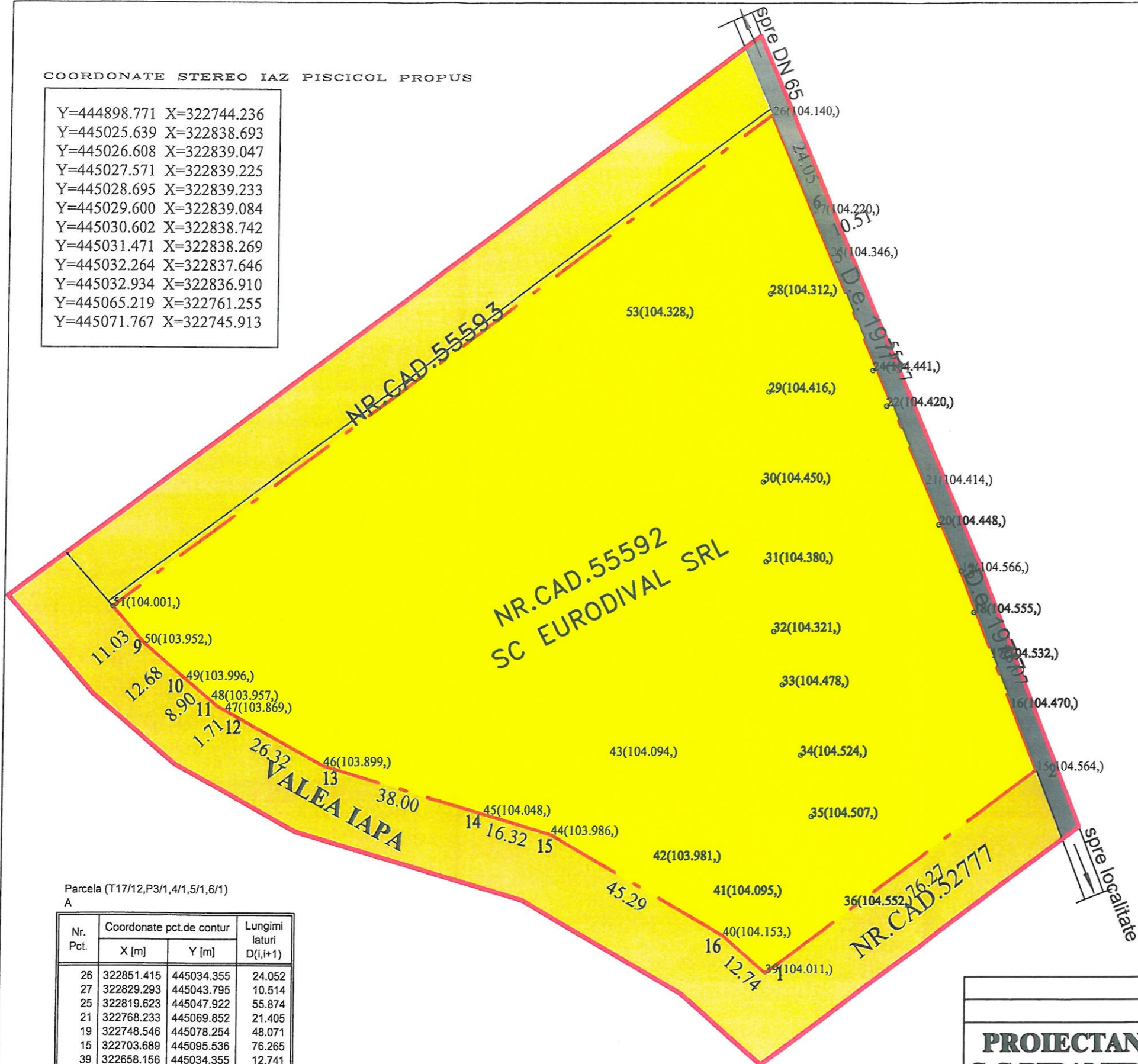


COORDONATE STEREO IAZ PISCICOL PROPUS

Y=444898.771	X=322744.236
Y=445025.639	X=322838.693
Y=445026.608	X=322839.047
Y=445027.571	X=322839.225
Y=445028.695	X=322839.233
Y=445029.600	X=322839.084
Y=445030.602	X=322838.742
Y=445031.471	X=322838.269
Y=445032.264	X=322837.646
Y=445032.934	X=322836.910
Y=445065.219	X=322761.255
Y=445071.767	X=322745.913

LEGENDA:

- LIMITA ZONA STUDIATA PRIN PUZ S=29067.74 mp
- LIMITA TEREN CE A GENERAT PUZ S=20740.00 mp
- ZONA CIRCULATHI CAROSABILE EXISTENTE
- TEREN EXTRAVILAN ARABIL CE A GENERAT PUZ CU NR.CAD.55592
- TERENURI VECINE CARE APARTIN ZONEI STUDIATE PRIN PUZ TERENURI APARTINAND EXTRAVILANULUI COMUNEI SLATIOARA



Parcela (T17/12,P3/1,4/1,5/1,6/1)
A

Nr. Pct.	Coordonate pct.de contur		Lungimi laturi D(i,i+1)
	X [m]	Y [m]	
26	322851.415	445034.355	24.052
27	322829.293	445043.795	10.514
25	322819.623	445047.922	55.874
21	322768.233	445069.852	21.405
19	322748.546	445078.254	48.071
15	322703.689	445095.536	76.265
39	322658.156	445034.355	12.741
40	322666.555	445024.774	45.288
44	322689.263	444985.590	16.316
45	322693.874	444969.939	37.997
46	322704.612	444933.491	26.324
47	322717.290	444910.421	1.708
48	322718.113	444908.924	8.895
49	322723.876	444902.148	12.678
50	322732.089	444892.490	11.028
51	322740.374	444885.212	185.940

S(T17/12,P3/1,4/1,5/1,6/1)=20740.00mp P=595.096m



PROIECTANT GENERAL S.C.PIRAMID PROIECT S.R.L CUI RO13406974, Cod fiscal: J28/188/2000 SLATINA, JUD. OLT Tel: 0249/430111 mobil: 0765/345081-0766/457478		Benef: SC EURODIVAL SRL COM.SLATIOARA, JUD. OLT	Nr.Pr. 189
		Den: P.U.Z PENTRU CONSTRUIRE IAZ PISCICOL CU EXTRACTIE DE BALAST COMUNA SLATIOARA, T.17/12 SI P.3/1, P.4/1 P.5/1, P.6/1, JUD. OLT	Faza: P.U.Z
Sef proiect arh. Ionescu A.	Denumire Plan: SITUATIE EXISTENTA	Nr.Pl. U.1	
Proiectat arh. Ionescu A.	Sc: 1:1000	Data: 05/08/2022	
Desenat: ing. Florescu D.			