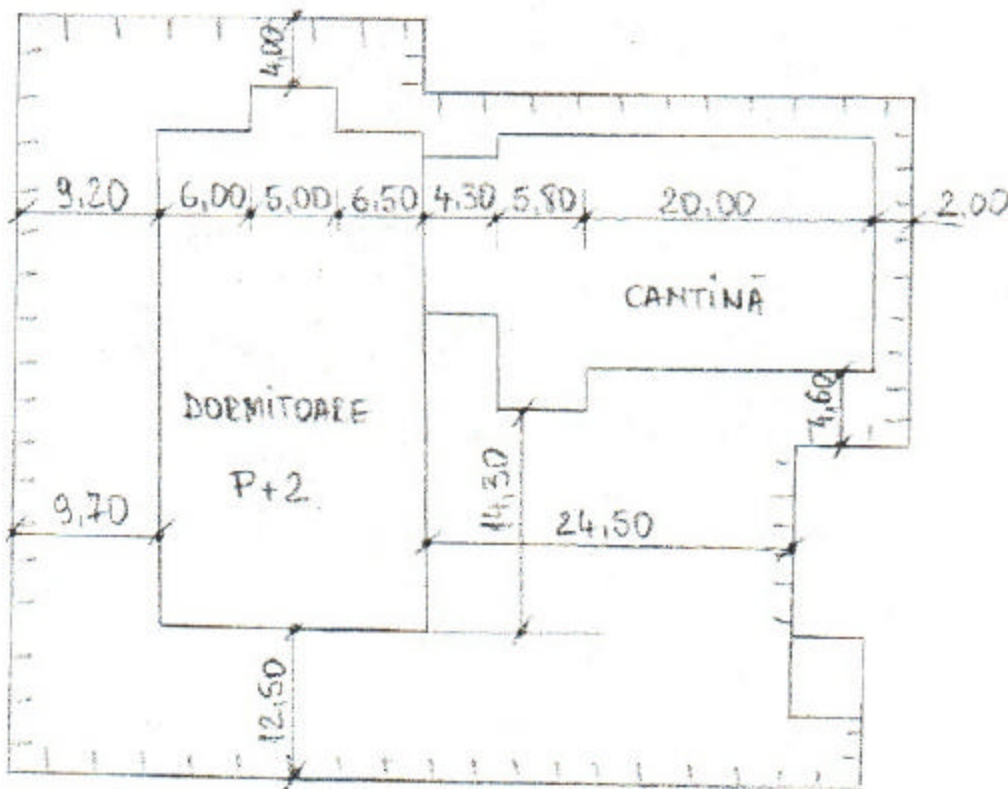


ANEXA
la Hotărârea nr. 98/1978/2006

CENTRUL DE PLASAMENT „OPTIMISTI”
Str. G-ral. GHE. MAGHERU, NR. 13A
CARACAL



PLAN SITUATIE

$$S_c = 1088,05 \text{ m}^2$$

$$S_D = 2845,35 \text{ m}^2$$

$$\text{Teren aferent} = 3845 \text{ m}^2$$

Intocmit
Sef Serviciu

