

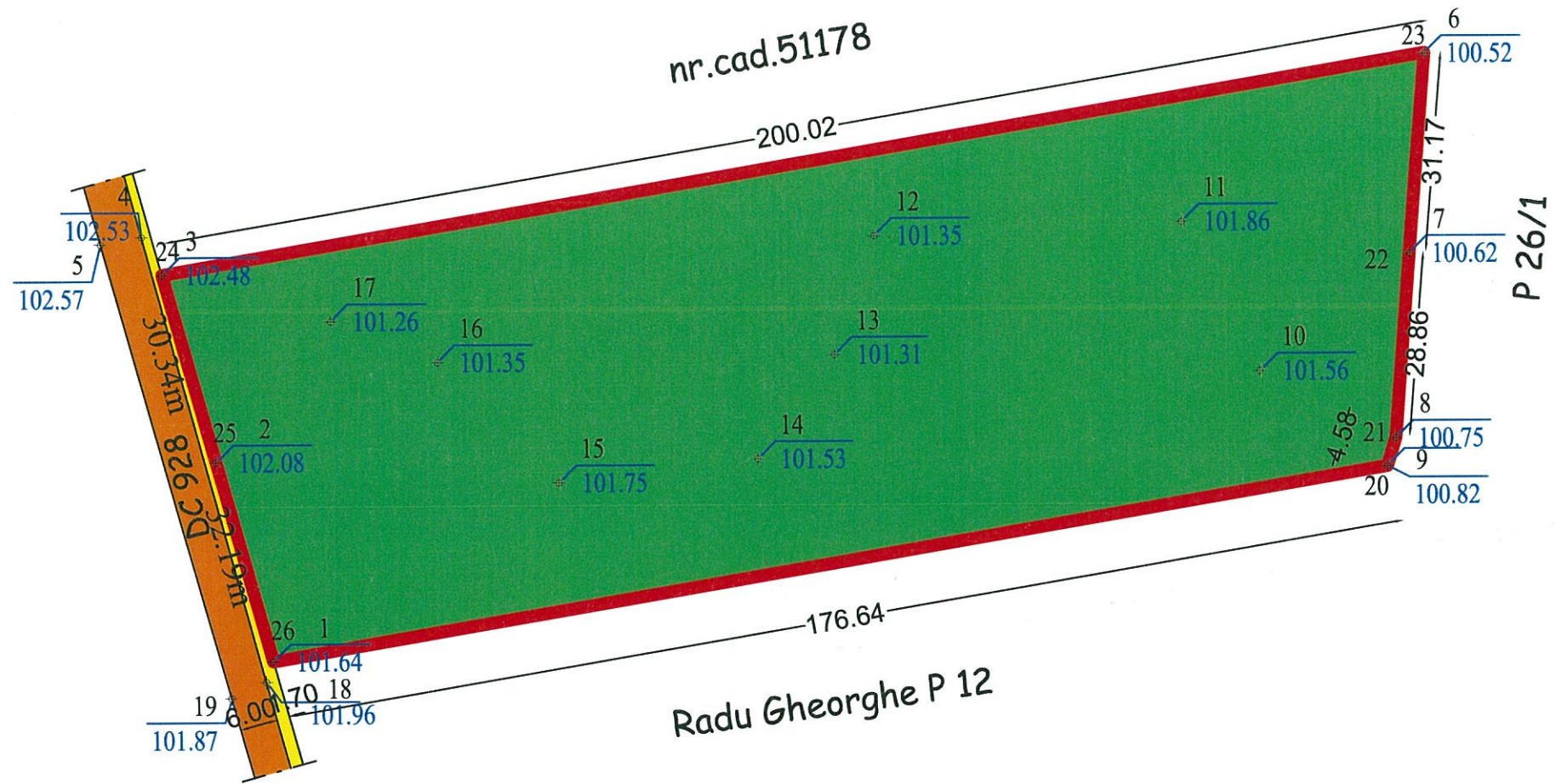
LEGENDA:

- LIMITA P.U.Z. S=11747,00mp
(TEREN CE SE VA INTRODUCI IN INTRAVILAN)
- TEREN ARABIL
- AMPRIZA DRUM
- CIRCULATII CAROSABILE

Parcela(5)

Nr. Pct.	Coordonate pct.de contur		Lungimi laturi D(i,i+1)
	X [m]	Y [m]	
20	320001.328	447596.592	4.584
21	320005.703	447597.961	28.860
22	320034.463	447600.357	31.170
23	320065.525	447602.945	200.025
24	320031.882	447405.770	30.339
25	320002.644	447413.870	32.195
26	319971.618	447422.466	176.642
S(5)=11746.99mp P=503.814m			

S.C.PIRAMID PROIECT S.R.L.		Benef: SC ADELA SRL MUN.SLATINA,JUD.OLT	Nr.Pr. 159
CUI RO 13406974 Cod fiscal:J28/188/2000 SLATINA,JUD.OLT Tel:0249/430111 mobil:0765/345081 0766/457478		Den: P.U.Z. PT.INTRODUCERE TEREN IN INTRAVILAN PT.AMPLASARE STATIE SORTARE PIATRA-OLT,T.110/1,P.12/1,P.12/2,OLT	Faza: P.U.Z.
Specialitate:	Nume:	Denumire Plan:	Nr.Pl.
Sef Proiect: arh.Dascalu M.		PLAN DE SITUATIE EXISTENT	U1
Proiectat: arh.Dascalu M.			
Desenat: ing. Florescu D.		Sc.1:1000	Data:2016



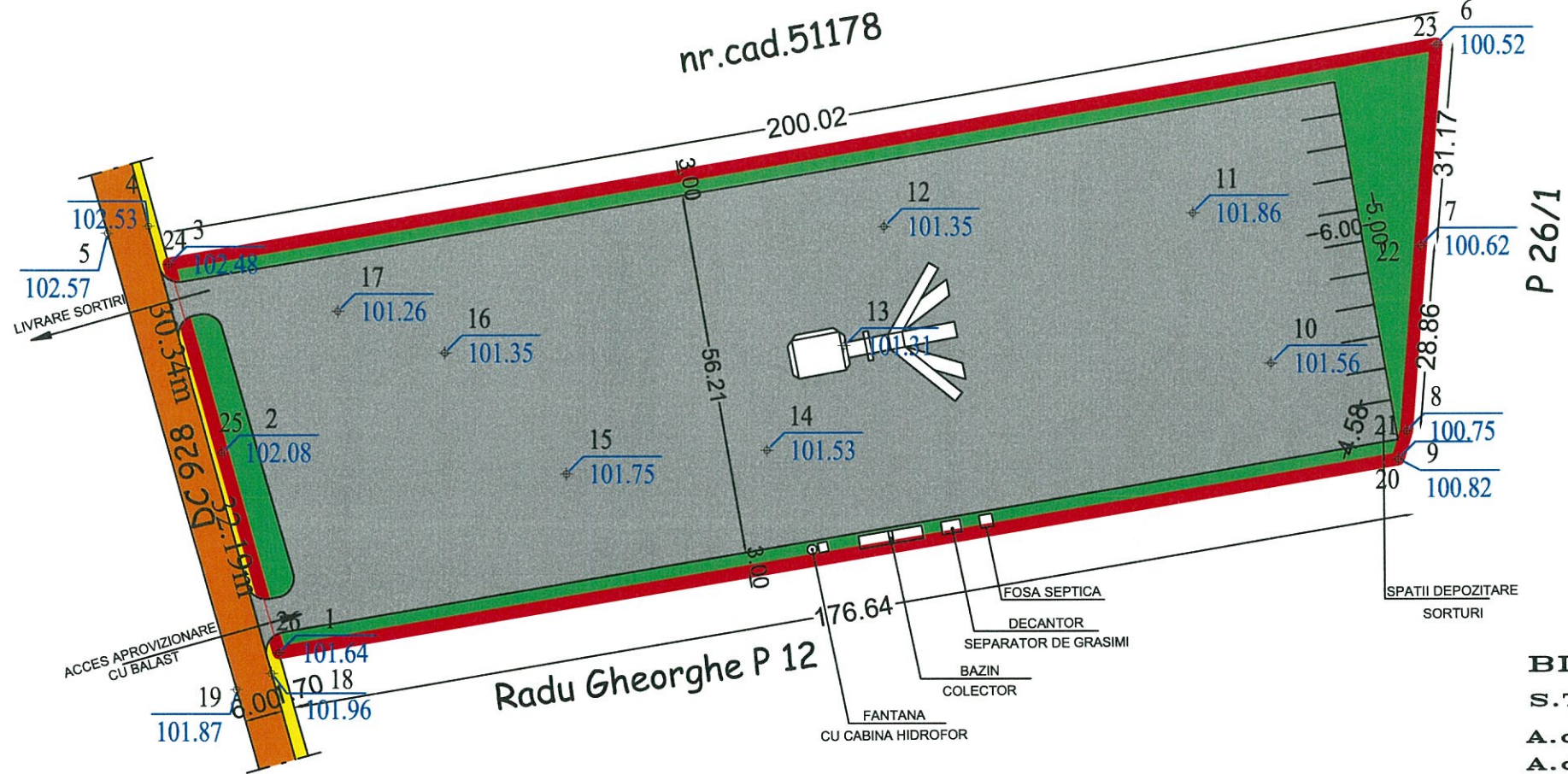
LEGENDA:

- LIMITA P.U.Z. S=11747,00mp
(TEREN CE SE VA INTRODUCERE IN INTRAVILAN)
- TEREN PROPRIETATE PRIVATA SC ADELA SRL
- TEREN PRIMARIE
- TEREN PRIMARIE

Parcela(5)

Nr. Pct.	Coordonate pct.de contur		Lungimi laturi D(i,i+1)
	X [m]	Y [m]	
20	320001.328	447596.592	4.584
21	320005.703	447597.961	28.860
22	320034.463	447600.357	31.170
23	320065.525	447602.945	200.025
24	320031.882	447405.770	30.339
25	320002.644	447413.870	32.195
26	319971.618	447422.466	176.642
S(5)=11746.99mp P=503.814m			

S.C.PIRAMID PROIECT S.R.L.		Benef: SC ADELA SRL MUN.SLATINA,JUD.OLT	Nr.Pr. 159
CUI RO 13406974 Cod fiscal:J28/188/2000 SLATINA,JUD.OLT Tel:0249/430111 mobil:0765/345081 0766/457478		Den: P.U.Z. PT.INTRODUCERE TEREN IN INTRAVILAN PT.AMPLASARE STATIE SORTARE PIATRA-OLT,T.110/1,P.12/1,P.12/2,OLT	Faza: P.U.Z.
Specialitate:	Nume:	Denumire Plan:	
Sef Proiect:	arh.Dascalu M.	REGIM JURIDIC	
Proiectat:	arh.Dascalu M.		
Desenat:	ing. Florescu D.	Sc.1:1000	Data:2016
		Nr.Pl. U2	



LEGENDA:

- LIMITA P.U.Z. S=11747,00mp**
(TEREN CE SE VA INTRODUCE IN INTRAVILAN)
- SPATII VERZI**
- CIRCULATII BALASTATE**
- CIRCULATII CAROSABILE**
- AMPRIZA DRUM**
- STATIE SORTARE**

BILANT TERITORIAL:

S.T.=11747,00mp
 A.c.=745.49mp
 A.d.=745.49mp
 P.O.T=6,34%
 C.U.T=0.06
 P.O.T max=40%

Parcela(5)

Nr. Pct.	Coordonate pct.de contur		Lungimi laturi D(i,i+1)
	X [m]	Y [m]	
20	320001.328	447596.592	4.584
21	320005.703	447597.961	28.860
22	320034.463	447600.357	31.170
23	320065.525	447602.945	200.025
24	320031.882	447405.770	30.339
25	320002.644	447413.870	32.195
26	319971.618	447422.466	176.642
S(5)=11746.99mp P=503.814m			

S.C.PIRAMID PROIECT S.R.L.		Benef: SC ADELA SRL	Nr.Pr.
CUI RO 13406974		MUN.SLATINA,JUD.OLT	159
Cod fiscal:J28/188/2000		Den: P.U.Z. PT.INTRODUCERE TEREN	Faza:
SLATINA,JUD.OLT		IN INTRAVILAN PT.AMPLASARE	
Tel:0249/430111 mobil:0765/345081		STATIE SORTARE	P.U.Z.
0766/457478		PIATRA-OLT,T.110/1,P.12/1,P.12/2,OLT	
Specialitate:	Nume:	Denumire Plan:	Nr.Pl. U3
Sef Proiect: arh.Dascalu M.		REGLEMENTARII	
Proiectat: arh.Dascalu M.			
Desenat: ing. Florescu D.		Sc.1:1000	Data:2016